



LETHBRIDGE PARK PUBLIC SCHOOL

A NSW Government P-6 Connected Communities school

2 Copeland Road, Lethbridge Park NSW 2770 | 02 9628 6655
lethbridpk-p.school@det.nsw.edu.au | lethbridpk-p.schools.nsw.gov.au



Find us on @LethbridgeParkPS

17 June 2024

At LPPS, Attendance Matters

Having your child attend school every day provides them with opportunities to develop positive relationships with friends and staff members. It also enables students to learn and build upon their understanding of what was taught the day before.

Our Attendance Goal

Lethbridge Park Public School is striving towards having excellent student attendance. Currently, our attendance rate is 86%. This sees us above the network (schools in the Mt Druitt area) average. Our goal is to reach an attendance rate of 92% or higher.

Attendance Incentives

To help support our students with attendance and reach our goal, our school has the following attendance incentives in place:

- **In Line On Time (ILOT)** – Small prize drawn each week to a student who has arrived and sitting in class lines when the morning bell rings.
- **Purple Star Attendance Shirts** – Drawn each week to a student with 100% attendance for the previous week.
- **Highest Class Attendance Award** – A class prize presented at the end of each term to the class with consistent highest attendance.
- **Bike/Scooter Prize** – Drawn at Badge Assembly at the end of each term to a student who has displayed high attendance.
- **Amazing Race** – A weekly poster displayed and shared in classrooms to track the class attendance percentage against other classes in the school.



In addition to our current attendance incentives, we have made the decision to introduce a new attendance incentive to acknowledge the positive attendance of our students.

A **NEW PRIZE** will now be made available this semester for students who have either:

- Outstanding semesterly attendance of 95% or greater or;
- Have improved their attendance by 5% or greater.

The prize is to be determined very soon. We are asking our students what prize they would like to receive. More information to come very soon. For your child to be in the running for this exciting new prize, please continue to encourage them to attend school each day.



LETHBRIDGE PARK PUBLIC SCHOOL

A NSW Government P-6 Connected Communities school

2 Copeland Road, Lethbridge Park NSW 2770 | 02 9628 6655
lethbridpk-p.school@det.nsw.edu.au | lethbridpk-p.schools.nsw.gov.au



Find us on @LethbridgeParkPS

Absence Explanations

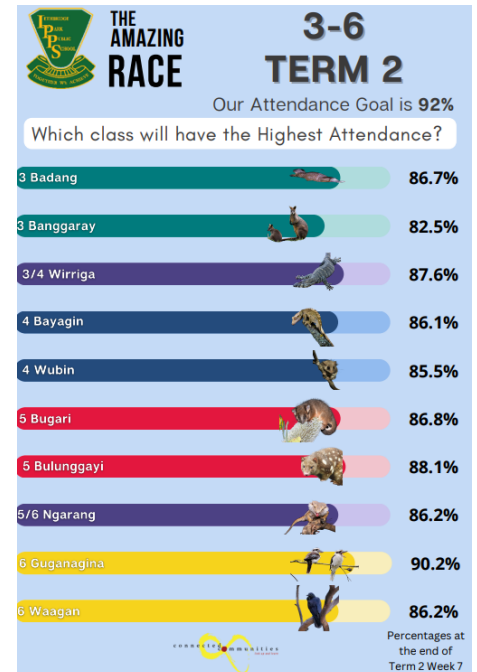
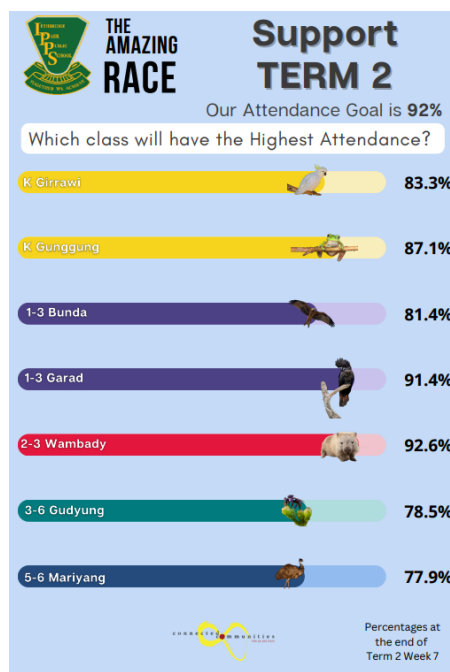
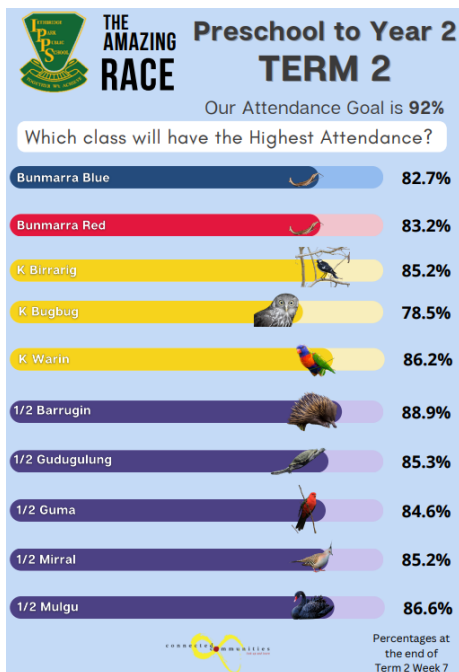
If your child is absent from school, please let us know why as soon as possible, even if it's just a few minutes at the start or end of the school day. Of course, there will be times when your child is unable to be at school (like when they are unwell). Medical appointments should take place outside school hours where possible and family holidays should be taken in term breaks.

Explanations can be made by:

- Writing an absence explanation letter
- Phoning the front office
- Responding to the SMS sent by the school

Amazing Race

Below is the Amazing Race poster for Term 2, Week 7. Check out how your child's class is tracking with their attendance. These posters are shared and displayed in classrooms each week to track class attendance percentages.



The evidence is clear that consistent attendance is the essential first step for your child to have a positive experience at school. Every day matters for your child's learning. The school we are trying to create is one for kids with endless opportunities for kids to engage in the life of the school.

Thank you again for working with our teachers and support staff to make sure your child is at school, on time, every day. We all want to see our students learn, grow and belong in our inclusive and outstanding education system.

Kind regards,

Mr Fitzgerald
Assistant Principal Mentor

